

LZDB DUBNICA

ARP 485949N 0181132E

771 ft (235 m)

FIC
124,300



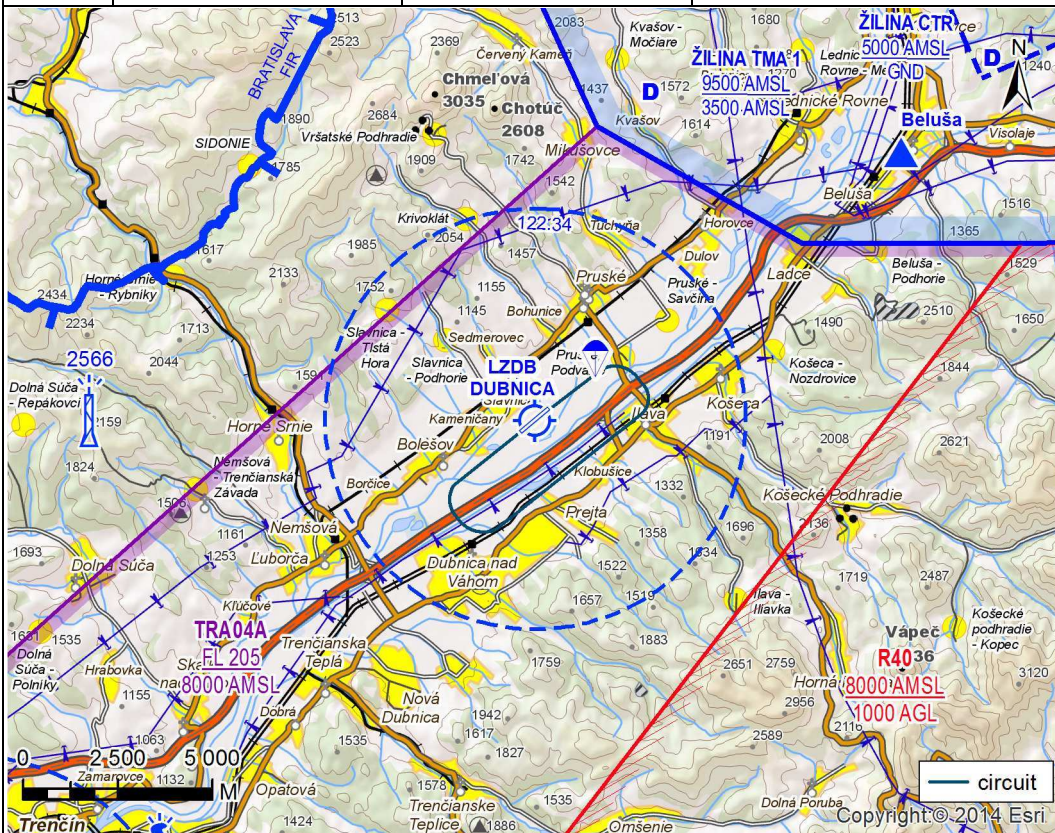
DUBNICA TRAFFIC
122,340

RWY 05L/23R 05R/23L
1 100 m 1 100 m

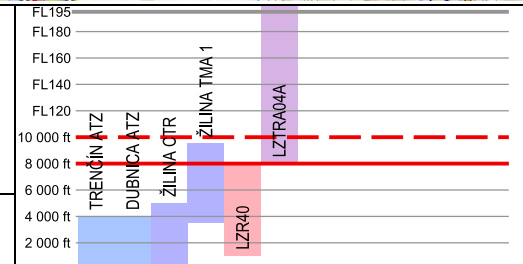
VFR day Circling:
1 800 ft (550 m) AMSL
Public Domestic

MON-FRI O/R
OCT-MAR: SAT-SUN
0800-1400 (0700-1300)
APR-SEP: SAT-SUN:
0600-1400

+421/42/449 31 85
Aeroklub Dubnica nad Váhom
Letisko Slávnica č. 8
018 54 SLÁVNICA
akdubnica@bb.telecom.sk



Last change: information about parachute jumping activities added



LZDB DUBNICA

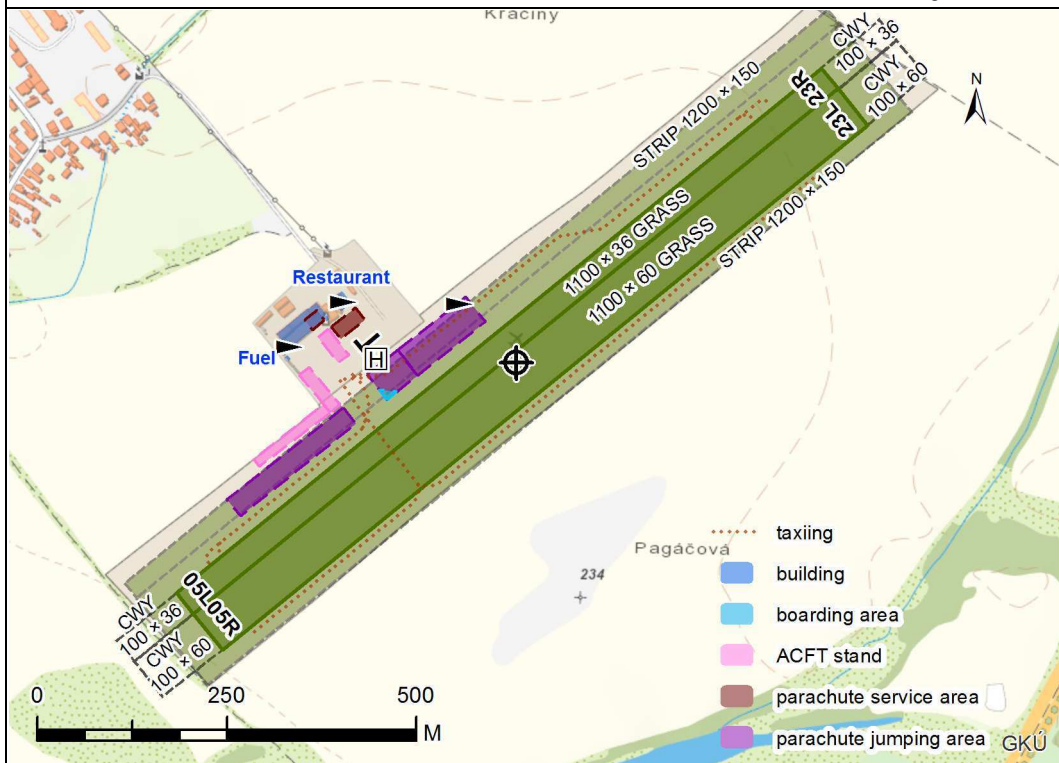
ARP 485949N 0181132E

771 ft (235 m)



DUBNICA TRAFFIC
122,340

RWY	MAG direction	TORA (m)	TODA (m)	ASDA (m)	LDA (m)	Strength
05L	045°	1 100	1 200	1 200	1 100	12 000 kg/0,55 MPa
23R	225°	1 100	1 200	1 200	1 100	12 000 kg/0,55 MPa
05R	045°	1 100	1 200	1 200	1 100	12 000 kg/0,55 MPa
23L	225°	1 100	1 200	1 200	1 100	12 000 kg/0,55 MPa



All the year, snow clearance is not provided.

Limited, O/R 24 HR PN

O/R, accommodation at the airport - 50 beds. Hotels in the town Dubnica and in its vicinity.

JET A1, BA 95 Natural,
AVGASS 100LL
TOTAL 100,TOTAL
D100,TOTAL 15W50,TOTAL
100XP

Limited, O/R PN

Emergency call: 112
Hospital in the town Ilava.

Restaurant at AD.

Train, bus

1. Local traffic regulations

For taxiing is used grass runway side stripe west from RWY 05L/23R or by the instructions of Dubnica TRAFFIC.

Aerodrome traffic circuits:

RWY 23L - left hand (east) traffic circuits

RWY 05R - right hand (east) traffic circuits

For take-off from RWY 05L/23R all turns shall be executed to E only.

RWY 05R/23L is used for winch launching of gliders.

School and training flights are performed by Flight School and Dubnica Aeroclub.

Parachuting may take place. Dropping area is located in the N part of the RWY.

2. Charges

NIL

3. Additional information

For Dubnica aerodrome the parachute symbol means a navigation warning of parachute jumping performed within the ATZ horizontal limits from GND to upper limit of the class G airspace (even above the ATZ upper limit).

At Dubnica aerodrome based on coordination with the ACC the activity up to FL 140 can take place in this area.

The navigation warning is effective year round from SR till SS.

The parachute symbol is shown on the Aeronautical Chart - ICAO 1 : 500 000 and on the Aerial Sporting and Recreational Activities Index Chart.

The aerodrome operator or person responsible for executing of parachute jumping at the aerodrome shall report by phone commencement of parachute jumping at least 30 minutes in advance and termination without delay to the Bratislava FIC unit.